

dkan

DKAN Open Data Platform

About

DKAN is a Drupal-based community-driven, free and open source open data platform offering a full suite of cataloging, publishing and visualization features.

With DKAN, organizations and individuals have ultimate freedom to publish and open up data to the public.

Ready to Use

DKAN was identified by the U.S. federal government's Project Open Data as a **“ready-to-use”** tool **“that will help agencies jump-start their open efforts”** and a **“real, implementable solution developed to significantly reduce the barrier to implementing open data at your agency.”**

Who is DKAN for?

Publishers:

- **City, state or local government agencies** that would like to share information about education, the environment, health care, transportation and more.
- **Non-profits, NGOs or universities** that are also interested in opening up their data.

Users:

- **Citizens, researchers, students and journalists** who wish to access public data and make use of it.

DKAN Adoption

30

Countries

35

Cities

5

U.S. states and
federal agencies

Core Values

- Community and User Empowerment
- Transparency and Openness
- Collaboration and Creativity
- Inclusiveness and Accessibility
- Sustainability and Extensibility

What makes open data 'open'?

Open data is about *availability* and *accessibility*.

Data should be:

- Published in a convenient, modifiable form that can be linked elsewhere and easily shared.
- Provided in a standard, structured format so that it is machine-readable.
- Guaranteed to be available and consistent over time.
- Traceable back to where it originates.

What makes open data 'open'? (continued)

Reusability

- Open data is data that is free to access, use and share.
- Open data can be easily redistributed.

Open to the general public

- The general public must be able to freely use, re-use and redistribute the data.

How Does DKAN Organize Data?

There are 3 content types for organizing data in DKAN:

- **Groups:** These represent data publishers or agencies. Groups contain datasets.
- **Datasets:** Datasets help categorize data and label it with the appropriate *metadata*. Datasets contain resources.
- **Resources:** The actual data resources, which can be files stored on the site, remotely linked files, or imported APIs.



Group

"Department of City Planning"



Dataset

"Demographics 2018"



Resource

"Survey2018.csv"



Resource

"CityStats.pdf"



Dataset

"Zoning Maps and Data"



Resource

"Zones.shp"



Resource

"ZoneData.xlsx"

Metadata

Metadata is the *who, what, when, where, and why* of data.

DKAN is built to comply with a wide number of national and international metadata standards, including DCAT and Project Open Data.

Custom specifications can be added.



Dataset

“Zoning Maps and Data”



Dataset Info



These fields are compatible with DCAT, an RDF vocabulary designed to facilitate interoperability between data catalogs published on the Web.

Field	Value
Publisher	Planning and Design
Modified Date	2016-06-21
Release Date	2016-06-09
Identifier	d6e638d4-0874-4b76-a1f2-377134835806
License	Other (Public Domain)

Additional content types in DKAN

- **Pages** - Used for an About page, FAQs, etc.
- **Visualizations** - Create charts (bar, pie, line, and more) within DKAN to illustrate your data.
- **Data Stories** - With a Data Story, you can create posts using charts, maps and more to present key points.
- **Data Dashboards** are similar and fulfill the need to present multiple visualizations on one page.

Data Publishing Features

- ✓ **Metadata compliance and customization tools**
- ✓ **Tags, Topics and Taxonomies** for easy browsing and organization.
- ✓ **Roles and permissions** for moderating user workflows.
- ✓ **Data harvesting** for expanding the listings of your catalog.
- ✓ **APIs** to allow your data to be used elsewhere, such as within a mobile app.

Data Publishing Features (continued)

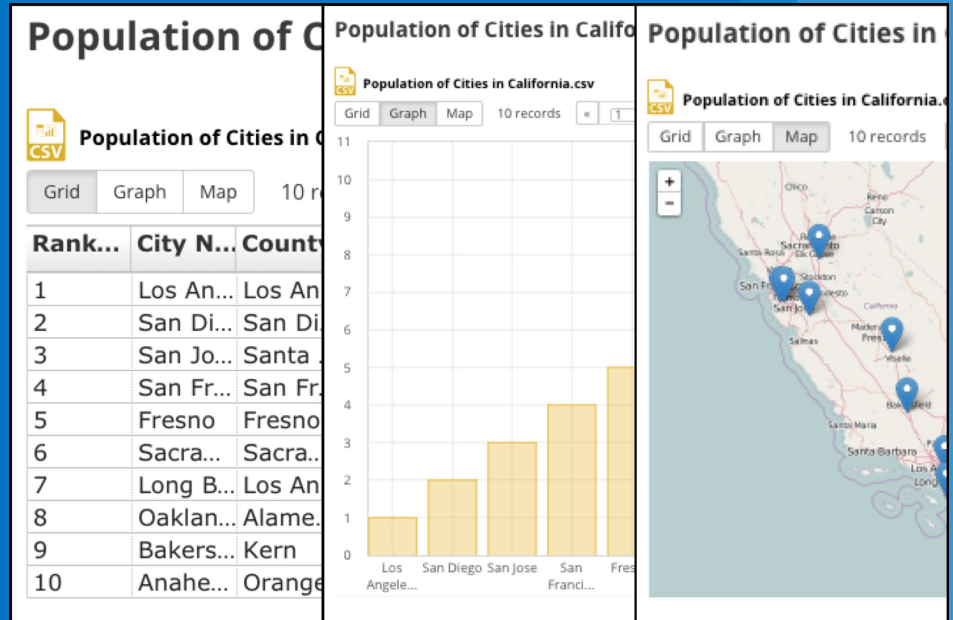
- ✓ **Data uploader** for resources from one's hard drive or from a remote source.
- ✓ **Chart and map previews** of data resources for publishers and end-users.
- ✓ **DKAN Datastore** efficiently parses and stores large datasets
- ✓ **Integrated CMS** for adding blogs, videos, slideshows and more.
- ✓ **Multilingual translation** available

Data Previews

You can preview resources within DKAN in three different formats:

- Grid
- Graph
- Map

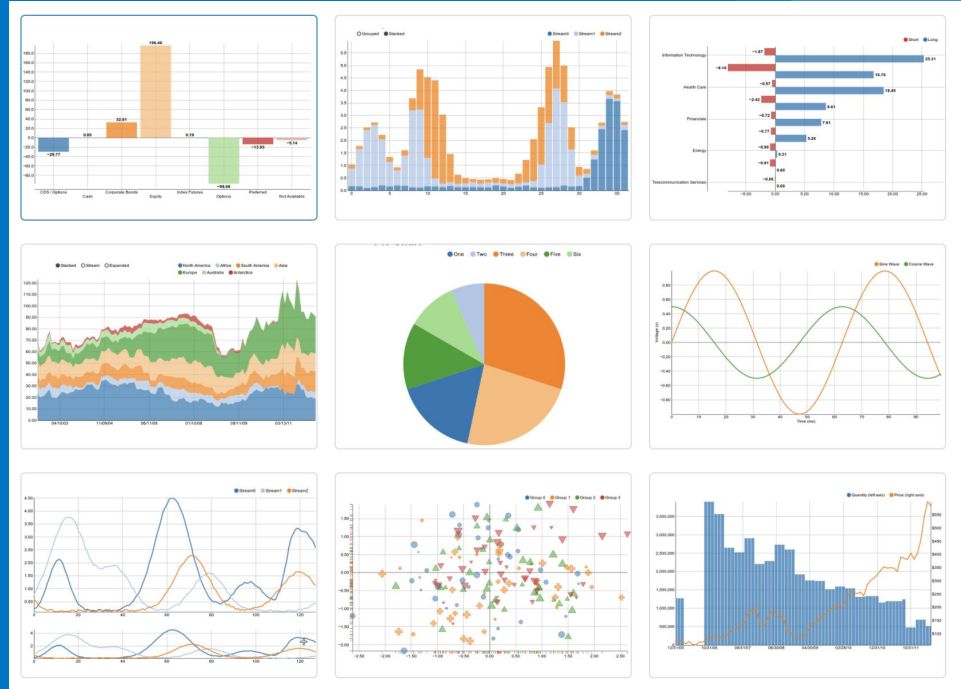
(DKAN Data Previews are different from Visualizations.)



Built-In Visualizations

- Bar/line/pie charts
- Scatter plots
- Stacked charts
- Lat/long point maps

These charts can all be created easily, without code, from within DKAN.



External Visualizations

- Tableau charts and maps
- ArcGIS maps and previews of shapefiles (.shp)
- Carto (formerly CartoDB) maps and visualizations.

LOUISVILLE OPEN DATA

OPEN DATA

data.louisvilleky.gov

search

About ▾ Content ▾ Topics ▾ Developers ▾ Gallery Services ▾ Contact Log in

Welcome to the Louisville Metro Open Data Portal

Louisville Metro Government is committed to increasing the openness and transparency of city government. This open data portal provides anytime access to the latest city data.

Our **Gallery** has community examples of how open data is being used:

Companies and Services

Some of the best examples of free online services based on our data.

Yelp Health Scores Health rating data sharing with Yelp.	Waze Mapping Community based mapping Connected Citizens partnership.
--	---

Map by Louisville Metro

DKAN Data Stories

DKAN supports Data Stories:

- Create posts using charts, maps and more to present key points.
- Data Stories can be posted sequentially, similar to a blog.
- For example, a city open data portal could feature monthly Data Stories about a successful project with charts and maps accompanying the details.

dkan 7.x-1.14-RC3

Home | Tree-Planting in Madison, WI Improves Environment and Quality of Life

Tree-Planting in Madison, WI Improves Environment and Quality of Life

View Edit

Education City Planning

To provide the ideal system of parks, natural resources and recreational opportunities whi everyone.

This is the vision statement that appears on the website of the Madison Parks department.

Urban forests have been connected to improved quality of life due to the natural ability of trees to intake harmful carbon dioxide and industrial pollutants as well as provide comfort with shade and space for people to congregate in public spaces. They're also a smart investment for government to reduce pressure from rainfall runoff on their sewer systems.

Madison, Wisconsin is home to thousands of trees, and urban forestry is a core service provided by the local government.

Trees of Madison

Hover over a tree species or use the search to see those trees on the map below.

Graph Search

Hover a tree species:

Species	Count
Norway Maple	20,918
Green Ash	17,377
Honeylocust Var.	9,919
Littleleaf Linden	3,894
Honeylocust 'Skyline'	1,390
White Ash	2,877
American Basswood	2,891
Linden 'Redmond'	2,762
Hackberry	2,635
Crab Apple Sp.	1,891

Number of trees by species in Madison.

All Trees

Map Stats

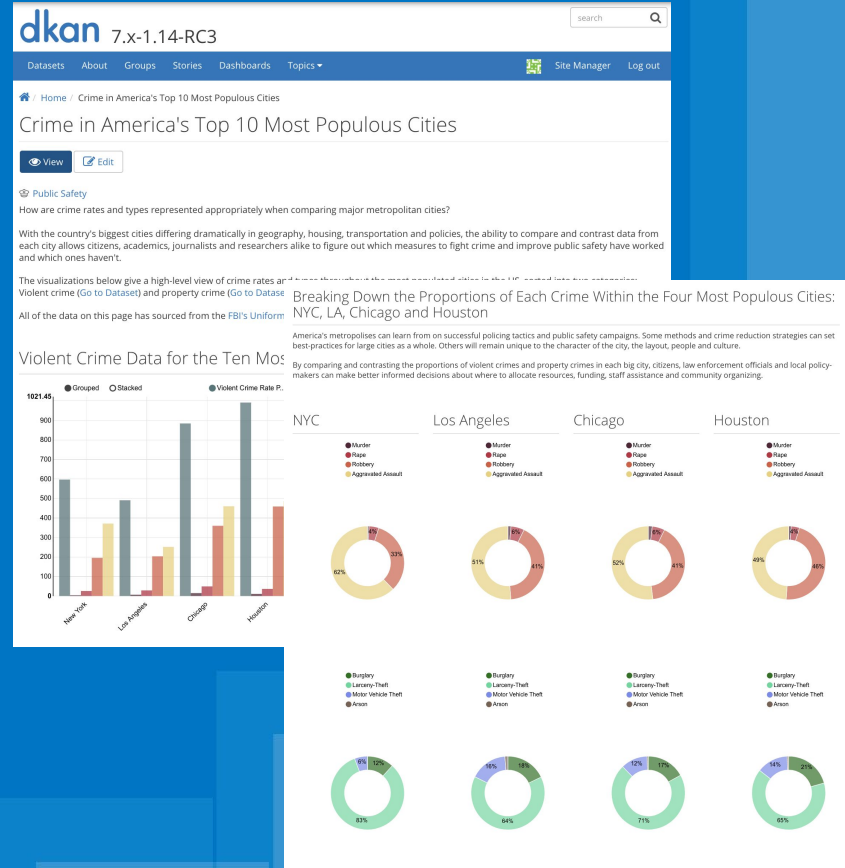
- NORWAY MAPLE
- GREEN ASH
- HONEYLOCUST VAR.
- LITTLELEAF LINDEN
- HONEYLOCUST 'SKYLINE'
- WHITE ASH
- AMERICAN BASSWOOD
- LINDEN 'REDMOND'
- HACKBERRY
- CRAB APPLE SPP.
- OTHERS

Leaflet | MapBox, CARTO, attribution

DKAN Data Dashboards

Another content type built into DKAN is Data Dashboards:

- Data Dashboards are similar to Data Stories and fulfill the need to present multiple visualizations on one page.
- Data Dashboards provide a “one-stop shop” for viewing/publishing data with a common theme.



Roles / Permissions / Workflows

DKAN offers 3 roles for moderating user permissions and workflows:

- Site Manager
- Editor
- Content Creator

The **DKAN Workbench** module allows content to move through moderation states of “Drafts,” “Needs Review” and “Published.”

Tech Specs

- Drupal
- PHP
- Can support data resources of up to 10 gb

Framework

DKAN	Contributed Modules	Drupal Core
<ul style="list-style-type: none">• Automated data harvesting• Catalog framework• Data Dashboards• Data Stories• Datastore API• Mechanism for API endpoints• Open Data Schema Mapper• Project Open Data• Theming• Visualizations• Workflow	<ul style="list-style-type: none">• Analytics• Federal Extras package• Node clone• Permissions• Scheduler• Search• Specialized• Workflow	<ul style="list-style-type: none">• Content management• General framework• Interface• Roles and permissions• Static content• User management

Support

Global ecosystem of custom
development, services and
support

dkan

CivicActions

ANGRY CACTUS



< ANNAI >

Hosting

- Self / on-premise
- Third party

License

DKAN is freely-available under the GPLv2 (or later) open source license.

Roadmap

- Quarterly: Minimum two developments items per quarter
- Frequent: Security updates, bug fixes, minor enhancements
- Learn more: getdkan.org/roadmap

Maintainer

CivicActions provides critical financial and development support to keep Project DKAN open and fully sustainable.

CivicActions

Connect

- Web: getdkan.org
- Email: info@getdkan.org
- Slack: dkan.slack.com
- Twitter: [@getdkan](https://twitter.com/getdkan)
- GitHub: github.com/getdkan
- Facebook: facebook.com/getdkan